

PART OF THE NW.1/4, OF SECTION 27, T.7N., R.2W., S.L.B. & M.

STILLCREEK VILLAGE PRUD PH 3E

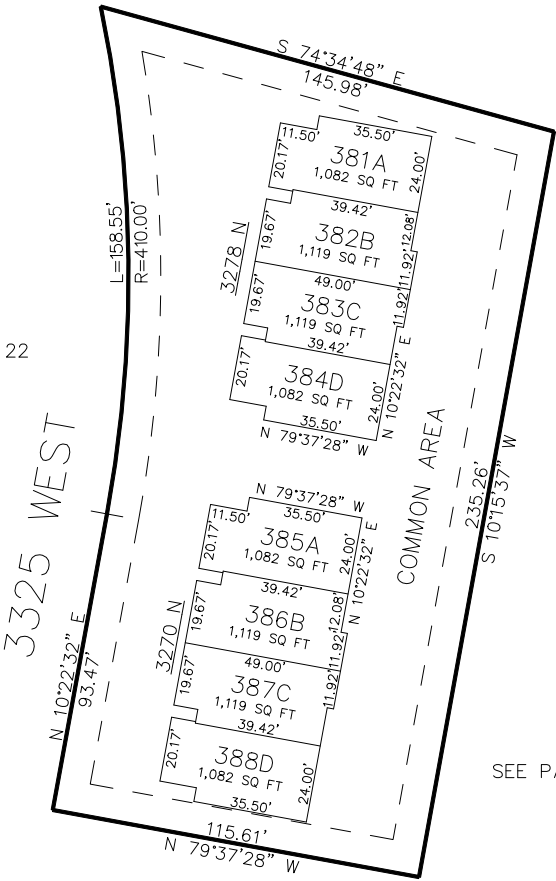
IN PLAIN CITY

SCALE 1" = 30'

TAXING UNIT: 21

SEE PAGE 10

SEE PAGE 22



LOT	SERIAL #	OWNERSHIP
381A	194630001	ZACHARY CHILDERS & WF KENDYL L
382B	194630002	THOMAS J WILSON & BROOKLYN P WYAN
383C	194630003	PARKER ADAMS & CASSIDY ADAMS
384D	194630004	GWENITH CHENEY & AUSTIN RODNEY CARTER
385A	194630005	RACHEL NATASHA WIGGINS
386B	194630006	COREY SMITH & CORA SMITH
387C	194630007	ANDREW KARNER & PAUL KARNER & KARTER N MAHAS
388D	194630008	VISIONARY HOMES 2022 LLC
C.A.	194630009	STILLCREEK VILLAGE PRUD HOA

SEE PAGE 22

SEE PAGE 22

10' UTILITY & DRAINAGE EASEMENTS EACH
SIDE OF PROPERTY LINES AS INDICATED
BY DASHED LINES EXCEPT AS OTHERWISE
SHOWN.

FOR COMPLETE SURVEY DATA SEE
ORIGINAL DEDICATION PLAT IN
BOOK 94, PAGE 34 OF RECORDS.